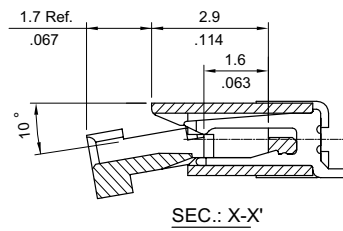
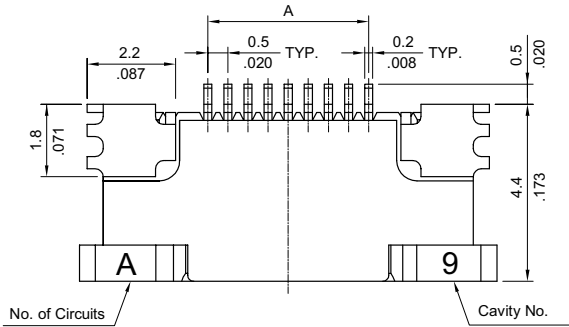
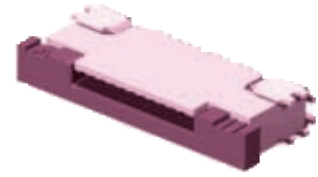
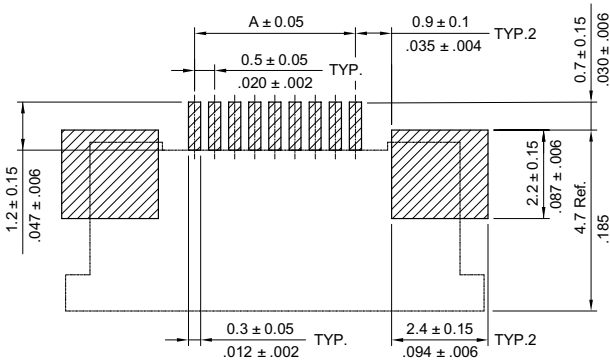
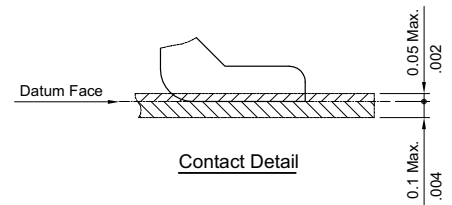
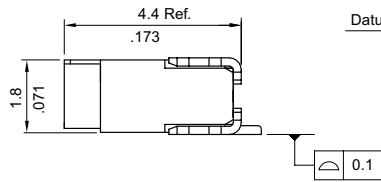
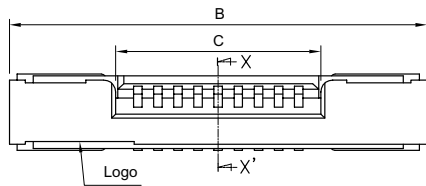


CF21 Series 0.50mm(.020") SMT ZIF FFC/FPC Upside Connectors

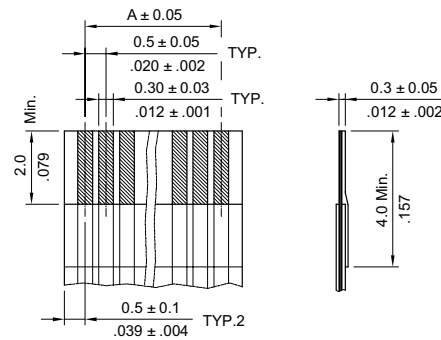
- ⊙ Tin-lead plated Phosphor Bronze Upside contact
- ⊙ Insulation: High temperature plastic UL 94V-0, Color Nature
- ⊙ Slider: High temperature plastic UL 94V-0, Color Brown
- ⊙ Actuator designed easy for FFC/FPC installation
- ⊙ Fully check by CCD and Hi-Pot test
- ⊙ With fixed metal tabs to secure connector in place
- ⊙ Available in Tube or Reel packing



A = 0.50 x No. of Spaces
 B = A + 6.4
 C = A + 1.1
 * Available in 6 through 50 circuits



Sold Pad Pattern



Accommodated FFC/FPC

Ordering Code

① **CF** ② **21** ③ **50** ④ **1U** ⑤ **0** ⑥ **R0**

- ① Series No.
- ② Circuits : 06 to 20
- ③ Plating code:
1= Tin-lead over Nickel

- ④ Contact style:
U= Upside contact
- ⑤ Color: 0 = Nature

- ⑥ Other options:
R0 = Tape & Reel
T0 = Tube Packing
* Special option Consult manufacturer