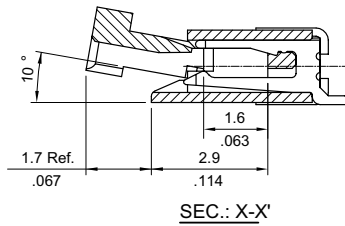
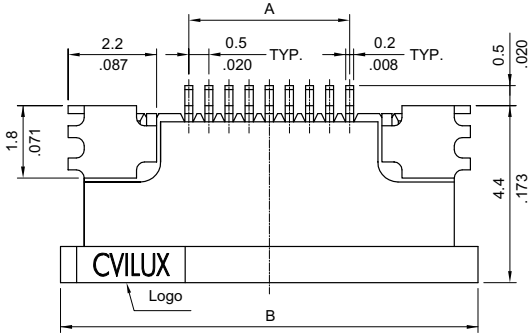
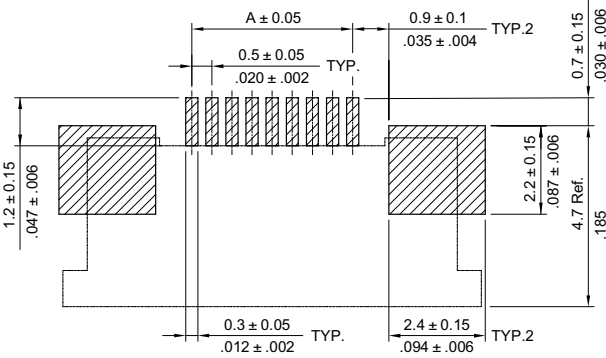
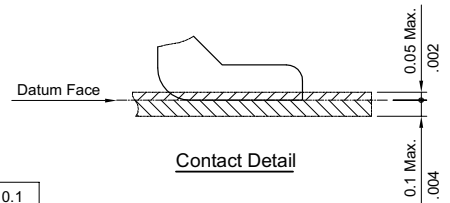
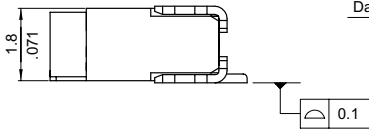
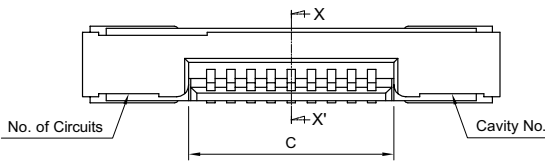


**CF21 Series 0.50mm(.020") SMT ZIF FFC/FPC Downside Connectors**

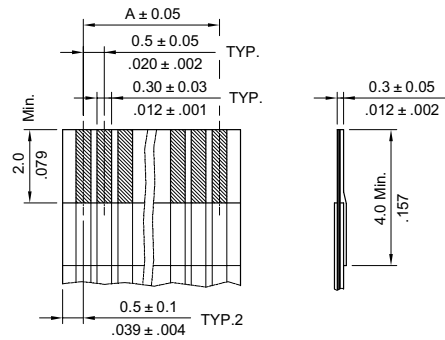
- ⦿ Tin-lead plated Phosphor Bronze Downside contact
- ⦿ Insulation: High temperature plastic UL 94V-0, Color Nature
- ⦿ Slider: High temperature plastic UL 94V-0, Color Brown
- ⦿ Actuator designed easy for FFC/FPC installation
- ⦿ Fully check by CCD and Hi-Pot test
- ⦿ With fixed metal tabs to secure connector in place
- ⦿ Available in Tube or Reel packing



A = 0.50 x No. of Spaces  
 B = A + 6.4  
 C = A + 1.1  
 \* Available in 6 through 50 circuits



Sold Pad Pattern



Accommodated FFC/FPC

**Ordering Code**

**1** **2** **3** **4** **5** **6**  
**CF 2 1 5 0 1 D 0 R 0**

- 1** Series No.
- 2** Circuits : 06 to 50
- 3** Plating code:  
1= Tin-lead over Nickel

- 4** Contact style:  
D= Downside contact
- 5** Color: 0 = Nature

- 6** Other options:  
R0 = Tape & Reel  
T0 = Tube Packing  
\* Special option Consult manufacturer