

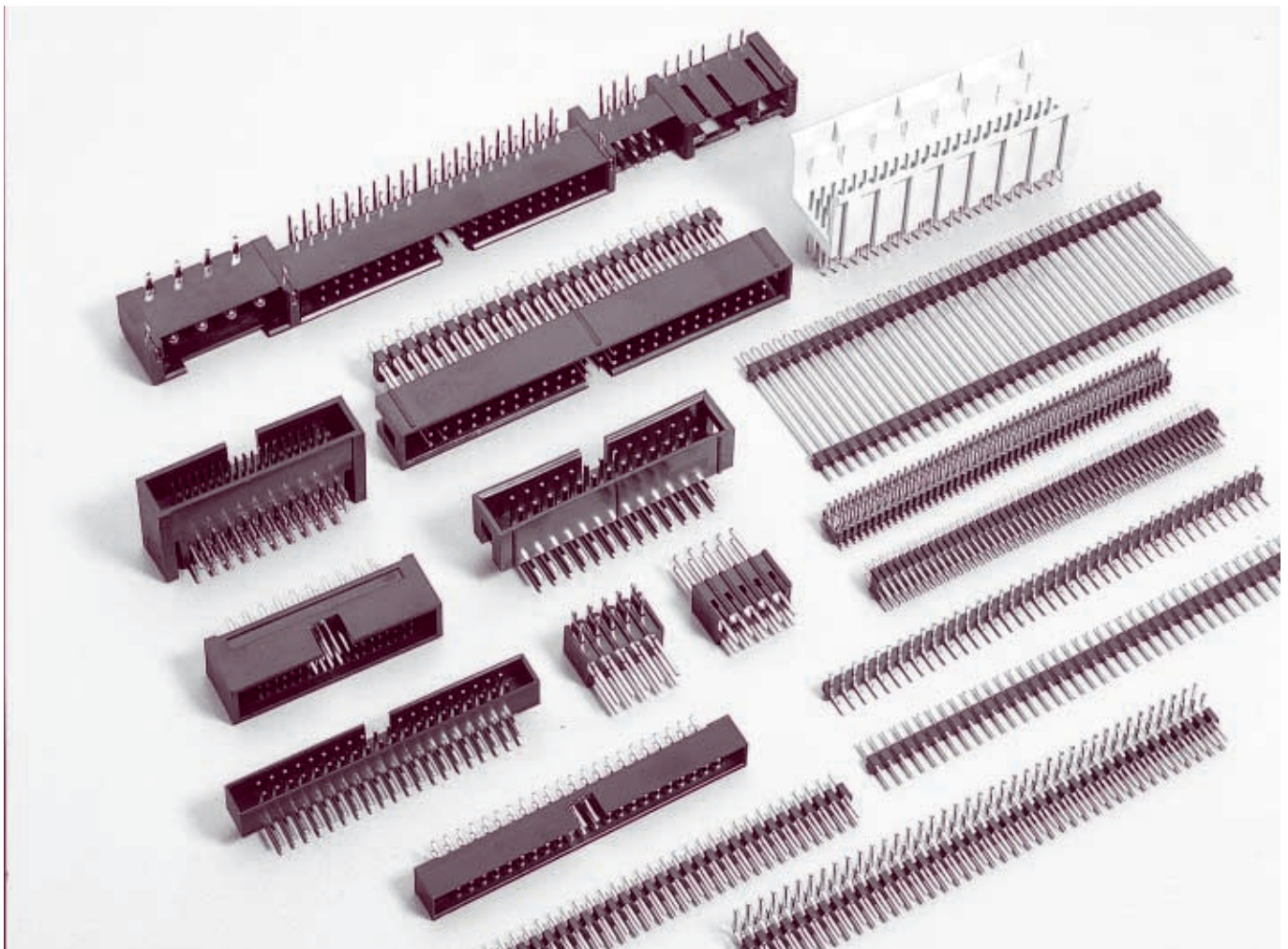
Introduction

The CH system pin headers includes variety of center spacing from 1.27mm through 10.00mm (.396"), they are available for pin through holes or surface mount version. It is comprised of straight and right angle headers in several styles including breakaway, shrouded, and end to end stackable. The PCB mounting peg or kincked pins able to help the lead properly positioned on the pad and assures the highest quality fillet.

This pin header's family also featured with stand-off prevents flux wicking problem during soldering process, conventional glass filled polyesters, which are suitable wave soldered headers. Typically, surface mount headers produced from high temperature plastic, able to withstand 230°C for 30 seconds, and in extreme cases 260°C for 10 seconds.

Additionally, many CviLux pin headers are available with optional alignment pins and fully compatible industry standard. Moreover, it is fully intermateable & interchangeable with CviLux CA - IDC connectors, CB - Printed circuits board mount connectors, CI - Interconnecting connectors or shunts to create thousands of different configurations and offers complete design flexibility for board-to-board connections.

This system is popular used in Computers, Peripherals, Test Equipment, Medical, Instrumentation and any other commercial applications that need ultra high density interconnects.



System CH - Technical Specifications

TEST METHODS FOR ELECTRONIC CONNECTOR IS ACCORDING TO FOLLOWING MILITARY STANDARD:

Dielectric Withstanding Voltage	- Per MIL-STD-1344A method 3001.1
Contact Resistance	- Per MIL-STD-1344A method 3002.1
Insulation Resistance	- Per MIL-STD-1344A method 3003.1
Solderability	- Per MIL-STD-202F method 208D

1.27mm (.050") Center spacing Pin Headers

Electrical Data-	Construction-
Current rating: 1 Amp	Hole through type Insulator: Black, Glass Filled Polyester
Dielectric Withstanding: 600 VAC for one minute	Surface mount type Insulator: High temperature plastic
Contact Resistance: < 20 mΩ	Flammability Rating: UL 94V-0
Insulation Resistance: > 1000 MΩ	Pins: 0.46mm(.018") square Brass
Operating Temperature: -40°C - +105°C	Contact plating: Selective Gold on surface contact area
	Please see ordering code for plating options

2.00mm (.079") Center spacing Pin Headers

Electrical Data-	Construction-
Current rating: 1 Amp	Hole through type Insulator: Insulator: Black, Glass Filled Polyester
Dielectric Withstanding: 1000 VAC for one minute	Surface mount type Insulator: High temperature plastic
Contact Resistance: < 20 mΩ	Flammability Rating: UL 94V-0
Insulation Resistance: > 1000 MΩ	Pins: 0.50mm(.020") square Brass
Operating Temperature: -40°C - +105°C	Contact plating: Selective Gold on surface contact area
	Please see ordering code for plating options

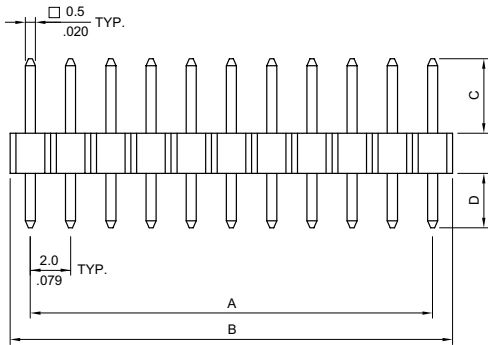
2.54mm (.100") Center spacing Pin Headers

Electrical Data-	Construction-
Current rating: 3 Amps	Hole through type Insulator: Black, Glass Filled Polyester
Dielectric Withstanding: 1500 VAC for one minute	Surface mount type Insulator: High temperature plastic
Contact Resistance: < 20 mΩ	Flammability Rating: UL 94V-0
Insulation Resistance: > 1000 MΩ	Pins: 0.64mm (.025") square Brass
Operating Temperature: -40°C - +105°C	Contact plating: Selective Gold on surface contact area
	Please see ordering code for plating options

CH11 Series Single Row Board Mount Pin Header

2.0mm(.079") Center spacing

- ⊙ Option high temperature plastic available
- ⊙ Mates CB22 and CI03 Connectors
- ⊙ Packing Method: PE Bag

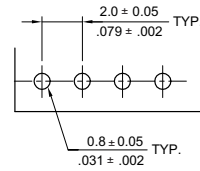


A = 2.0 x No. of Spaces
B = A + 2.0

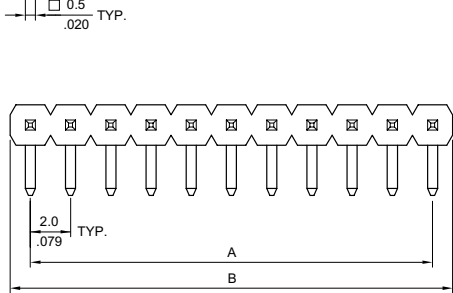
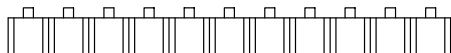
:E159616

* Available in 2 through 40 circuits

Option Code	Dimension	
	C	D
00	3.9(.154)	2.8(.110)
01	6.8(.268)	3.0(.118)



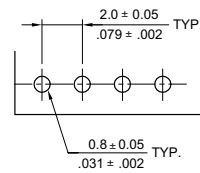
Recommended P.C. Board Layout



A = 2.0 x No. of Spaces
B = A + 2.0

* Available in 2 through 40 circuits

Option Code	Dimension	
	C	D
00	3.9(.154)	2.5(.098)



Recommended P.C. Board Layout

Ordering Code

① CH 1 1 ② 4 0 ③ 2 ④ V ⑤ 1 ⑥ 0 0

① Series No.
② Circuits:
02 to 40

③ Plating code:
1= Tin-lead over Nickel
2= Gold flash plated over Nickel
3= 15µin Gold plated over Nickel
4= 30µin Gold plated over Nickel

④ Tail Style: V= Straight
H= Right angle
⑤ Color: 1= Black
⑥ Other options:
00= Standard
*Special option Consult manufacturer

CH21 Series Single Row Dual Body Board Mount Pin Header

2.0mm(.079") Center spacing

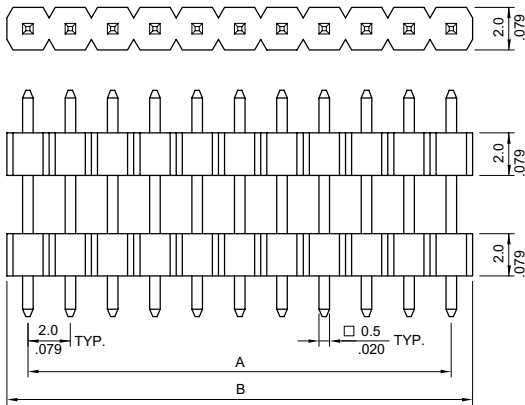
- ⊙ Option high temperature plastic available
- ⊙ Mates CB22 Connectors.
- ⊙ Packing Method: PE Bag



Ordering code

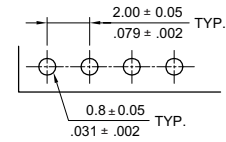
1 2 3 4 5 6
CH 2 1 4 0 2 V 1 0 0

<p>1 Series No.</p> <p>2 Circuits: 02 to 40</p>	<p>3 Plating code: 1= Tin-lead over Nickel 2= Gold flash plated over Nickel 3= 15µin Gold plated over Nickel 4= 30µin Gold plated over Nickel</p>	<p>4 Tail Style: V= Straight</p> <p>5 Color: 1= Black</p> <p>6 Other options: 00= Standard *Special option Consult manufacturer</p>
---	--	--



A = 2.0 x No. of Spaces
 B = A + 2.0
 * Available in 2 through 40 circuits

Option Code	Dimension		
	C	D	E
00	4.0(.157)	2.5(.098)	11.6(.457)



Recommended P.C. Board Layout

CH75 Series Dual Row Dual Body Board Mount Pin Header

2.0mm(.079") Center spacing

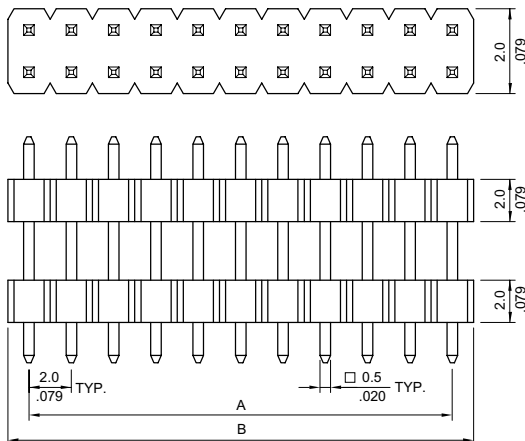
- ⊙ Option high temperature plastic available
- ⊙ Mates CB74 Connectors.
- ⊙ Packing Method: PE Bag



Ordering code

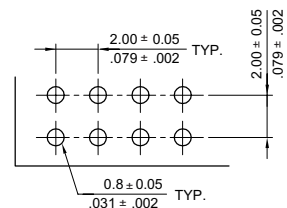
1 2 3 4 5 6
CH 7 5 8 0 2 V 1 0 0

<p>1 Series No.</p> <p>2 Circuits: 04 to 80</p>	<p>3 Plating code: 1= Tin-lead over Nickel 2= Gold flash plated over Nickel 3= 15µin Gold plated over Nickel 4= 30µin Gold plated over Nickel</p>	<p>4 Tail Style: V= Straight</p> <p>5 Color: 1= Black</p> <p>6 Other options: 00= Standard *Special option Consult manufacturer</p>
---	--	--



A = 2.0 x No. of Spaces
 B = A + 2.0
 * Available in 4 through 80 circuits

Option Code	Dimension		
	C	D	E
00	4.0(.157)	2.5(.098)	11.6(.457)



Recommended P.C. Board Layout

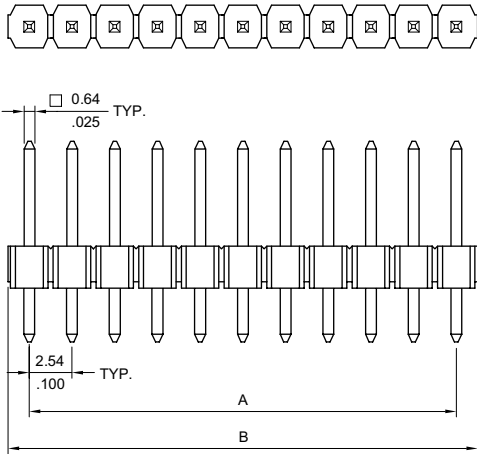
CH31 Series Single Row Board Mount Pin Header

2.54mm(.100") Center spacing

- ⦿ Option high temperature plastic available
- ⦿ With standoff prevent flux wicking
- ⦿ Mates CB33, CB37 and CB39 Connectors
- ⦿ Packing Method: PE Bag

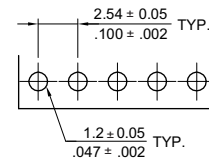
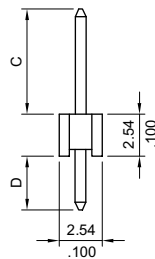


:E159616

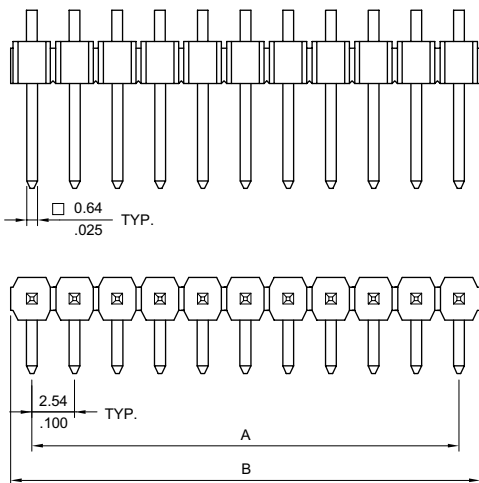


A = 2.54 x No. of Spaces
 B = A + 2.54
 * Available in 2 through 40 circuits

Option Code	Dimension	
	C	D
00	6.0(.236)	3.0(.118)
01	6.26(.246)	3.0(.118)
02	5.86(.231)	3.0(.118)
03	8.86(.349)	3.0(.118)

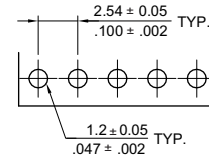
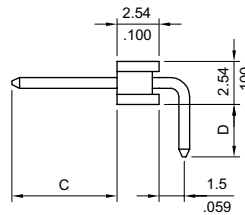


Recommended P.C. Board Layout



A = 2.54 x No. of Spaces
 B = A + 2.54
 * Available in 2 through 40 circuits

Option Code	Dimension	
	C	D
00	6.0(.236)	3.0(.118)
01	6.26(.246)	3.0(.118)
02	5.86(.231)	3.0(.118)
03	8.3(.327)	3.0(.118)



Recommended P.C. Board Layout

Ordering Code

① CH ② 31 ③ 40 ④ 2 ⑤ V ⑥ 1 00

① Series No.
 ② Circuits:
 02 to 40

③ Plating code:
 1= Tin-lead over Nickel
 2= Gold flash plated over Nickel
 3= 15µin Gold plated over Nickel
 4= 30µin Gold plated over Nickel

④ Tail Style: V= Straight
 H= Right angle
 ⑤ Color: 1= Black
 ⑥ Other options:
 00= Standard
 *Special option Consult manufacturer

CH34 Series Single Row Dual Body Board Mount Pin Header
2.54mm(.100") Center spacing

- ⊙ Option high temperature plastic available
- ⊙ Mates CB33, CB37 and CB39 Connectors
- ⊙ Packing Method: PE Bag

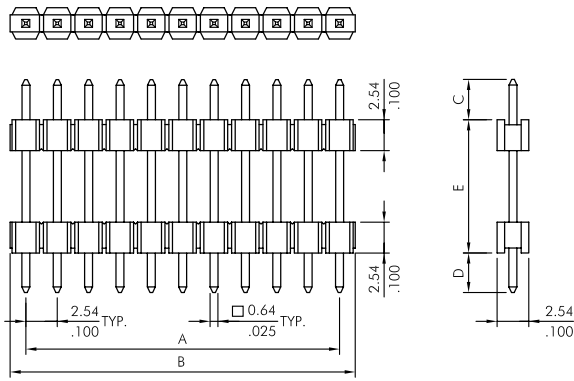


Ordering code

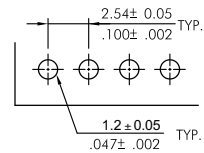
1 2 3 4 5 6
CH34 40 2 V 1 00

<p>1 Series No.</p> <p>2 Circuits: 02 to 40</p>	<p>3 1= Tin-lead over Nickel 2= Gold flash plated over Nickel 3= 15µin Gold plated over Nickel 4= 30µin Gold plated over Nickel</p>	<p>4 Tail Style: V= Straight</p> <p>5 Color: 1= Black</p> <p>6 Other options: 00= Standard *Special option Consult manufacturer</p>
---	---	---

A = 2.54 x No. of Spaces
B = A + 2.54
* Available in 2 through 40 circuits



Option Code	Dimension		
	C	D	E
00	10.3(.406)	3.2(.126)	12.0(.472)
01	3.15(.124)	3.15(.124)	9.0(.354)



Recommended P.C. Board Layout

CH85 Series Dual Row Dual Body Board Mount Pin Header
2.54mm(.100") Center spacing

- ⊙ Option high temperature plastic available
- ⊙ Mates CB82, CB83, CB85, CB87, CB91 and CB96 Connectors
- ⊙ Packing Method: PE Bag

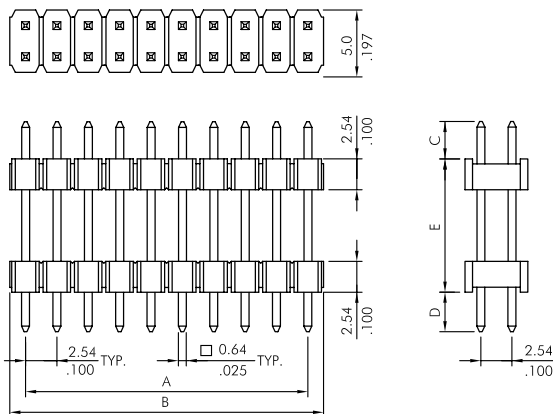


Ordering code

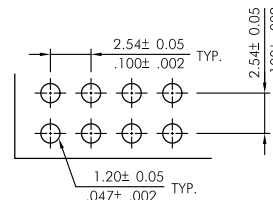
1 2 3 4 5 6
CH85 80 2 V 1 00

<p>1 Series No.</p> <p>2 Circuits: 04 to 80</p>	<p>3 Plating code: 1= Tin-lead over Nickel 2= Gold flash plated over Nickel 3= 15µin Gold plated over Nickel 4= 30µin Gold plated over Nickel</p>	<p>4 Tail Style: V= Straight</p> <p>5 Color: 1= Black</p> <p>6 Other options: 00= Standard *Special option Consult manufacturer</p>
---	---	---

A = 2.54 x No. of Spaces
B = A + 2.54
* Available in 2 through 40 circuits



Option Code	Dimension		
	C	D	E
00	2.1(.083)	2.7(.106)	16.2(.638)
01	8.6(.339)	3.0(.118)	18.2(.717)

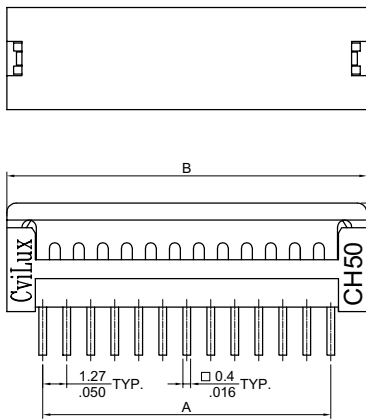
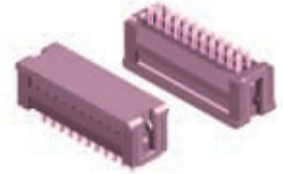


Recommended P.C. Board Layout

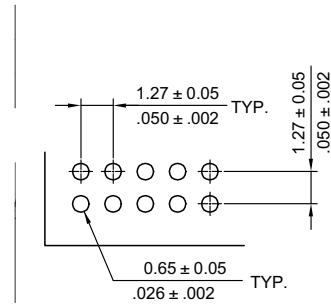
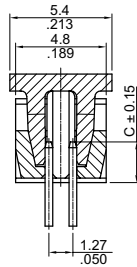
CH50 Series Zero Profile Dual Row Board Mount Pin Header

1.27mm(.050") Center spacing

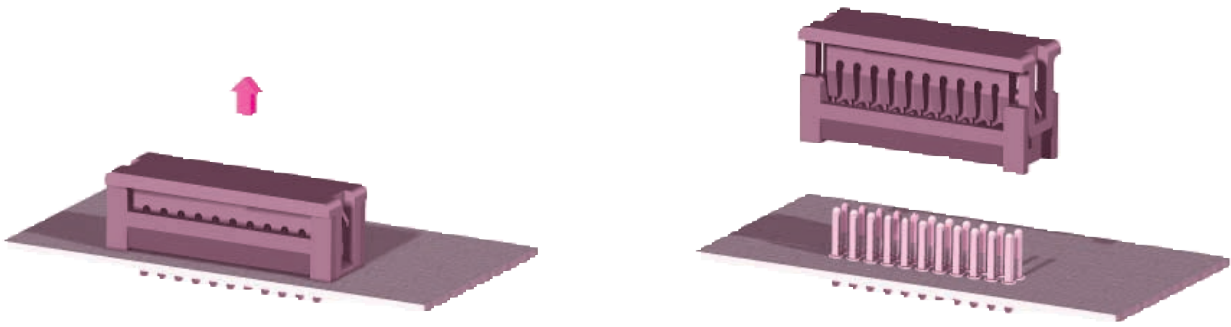
- ⊙ Special design with patent
- ⊙ Reliable pin retention
- ⊙ Two steps design easily remove pin carrier
- ⊙ High thermal temperature
- ⊙ Mates CB50 Connectors



A = 1.27 x No. of Spaces
 B = A + 3.81
 * Available in 6 through 80 circuits



Recommended P.C. Board Layout



Ordering Code

① CH ② 50 ③ 40 ④ 2 ⑤ D ⑥ 0 ⑦ T 0

① Series No.
 ② Circuits:
 06 to 80

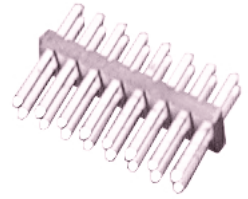
③ Plating code:
 1= Tin-lead over Nickel
 2= Gold flash plated over Nickel
 3= 15µin Gold plated over Nickel
 4= 30µin Gold plated over Nickel
 A= Selective 2µin Gold plated over Nickel
 B= Selective 15µin Gold plated over Nickel
 C= Selective 30µin Gold plated over Nickel

④ Contact Style:
 D= DIP Type
 ⑤ DIM. C: 0= 3.05mm , 1= 1.91mm
 ⑥ Packing:
 T= Tube Packing
 ⑦ Other Option: 0= Standard
 *Special option SMT Version Consult manufacturer

CH51 Series Dual Row Straight Board Mount Pin Header

1.27mm(.050") Center spacing

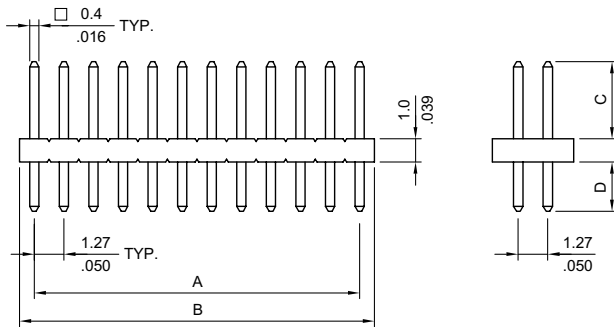
- ⊙ Option high temperature plastic available
- ⊙ With standoff prevent flux wicking
- ⊙ Mates CB50 Connectors
- ⊙ Packing Method: Tube / PVC Tray



Ordering code

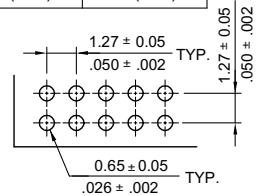
1 2 3 4 5 6
CH51 X1 2 V 1 01

<p>1 Series No. 10 to 100 X1= 100</p>	<p>3 Plating code: 1= Tin-lead over Nickel 2= Gold flash plated over Nickel 3= 15µin Gold plated over Nickel 4= 30µin Gold plated over Nickel</p>	<p>4 Tail Style: V= Straight 5 Color: 1= Black 6 Other options: 00= Standard *Special option Consult manufacturer</p>
--	--	--



A = 1.27 x No. of Spaces
B = A + 1.27
* Available in 10 through 100 circuits

Option Code	Dimension	
	C	D
00	3.0(.118)	4.2(.165)
01	3.0(.118)	2.3(.091)



Recommended P.C. Board Layout

CH82 Series Dual Row Surface Mount Pin Header

2.54mm(.100") Center spacing

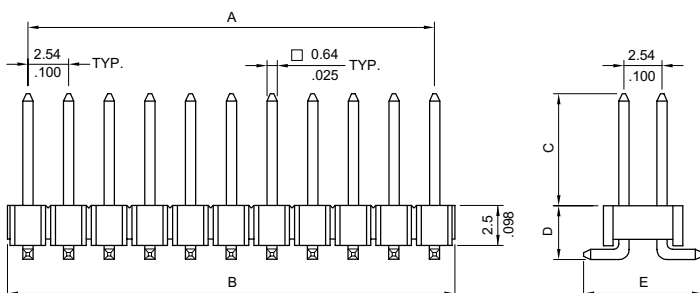
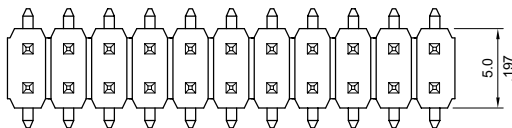
- ⊙ High temperature plastic
- ⊙ Mates CA21, CB82, CB83, CB85, CB87, CB91, CB96 and CB97 Connectors
- ⊙ Packing Method: PE Bag



Ordering code

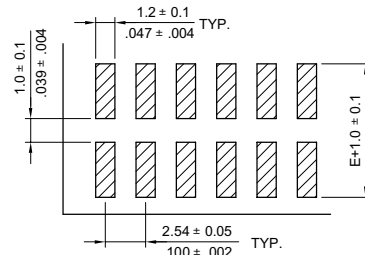
1 2 3 4 5 6
CH82 80 2 V 1 00

<p>1 Series No. 04 to 80</p>	<p>3 Plating code: 1= Tin-lead over Nickel 2= Gold flash plated over Nickel 3= 15µin Gold plated over Nickel 4= 30µin Gold plated over Nickel</p>	<p>4 Tail Style: V= Straight 5 Color: 1= Black 6 Other options: 00= Standard *Special option Consult manufacturer</p>
---	--	--



A = 2.54 x No. of Spaces
B = A + 2.54
* Available in 4 through 80 circuits

Option Code	Dimension		
	C	D	E
00	8.8(.346)	3.4(.134)	7.4(.291)



Solder Pad Pattern

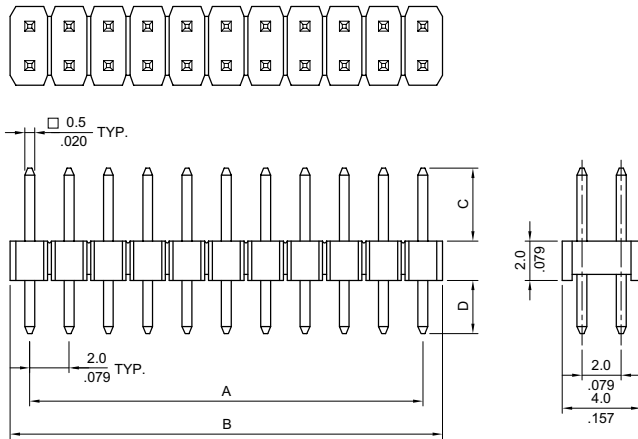
CH71 Series Dual Row Board Mount Pin Header

2.0mm(.079") Center spacing

- ⊙ Option high temperature plastic available
- ⊙ Straight and right angle contacts
- ⊙ With standoff prevent flux wicking
- ⊙ Mates CA11, CB74 and CB78 Connectors
- ⊙ Packing Method: PE Bag

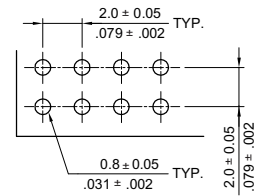


:E159616

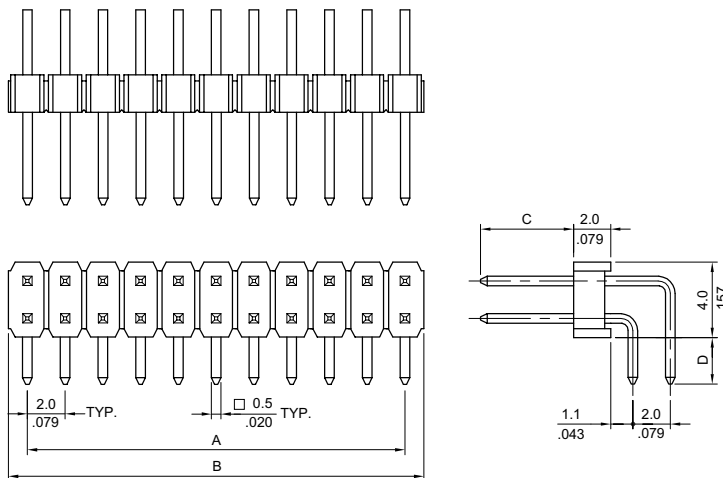


A = 2.0 x No. of Spaces
 B = A + 2.0
 * Available in 4 through 80 circuits

Option Code	Dimension	
	C	D
00	3.9(.154)	2.8(.110)
01	6.8(.268)	3.0(.118)

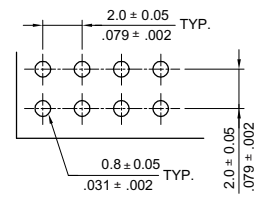


Recommended P.C. Board Layout



A = 2.0 x No. of Spaces
 B = A + 2.0
 * Available in 4 through 80 circuits

Option Code	Dimension	
	C	D
00	3.9(.154)	2.8(.110)



Recommended P.C. Board Layout

Ordering Code

1 CH **2** **3** **4** **5** **6**
CH71 80 2 V 1 00

- 1** Series No.
- 2** Circuits:
04 to 80

- 3** Plating code:
 1= Tin-lead over Nickel
 2= Gold flash plated over Nickel
 3= 15µin Gold plated over Nickel
 4= 30µin Gold plated over Nickel

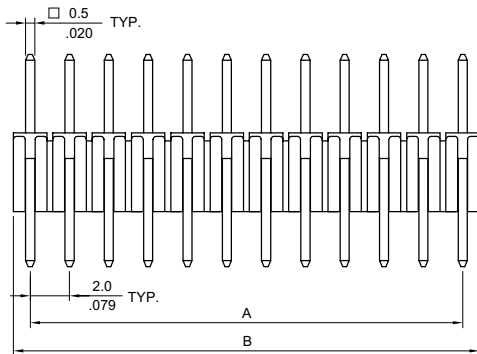
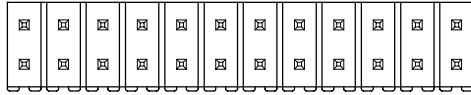
- 4** Tail Style:
 V= Straight
 H= Right angle
- 5** Color: 1= Black

- 6** Other options:
 00= Standard
 *Special option Consult manufacturer

CH72 Series Dual Row Board Mount Pin Header

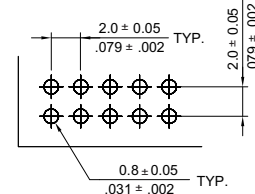
2.0mm(.079") Center spacing

- ⊙ Option high temperature plastic available
- ⊙ Straight and right angle contacts
- ⊙ Mates CA11, CB74 and CB78 Connectors
- ⊙ Packing Method: Tube / PVC Tray

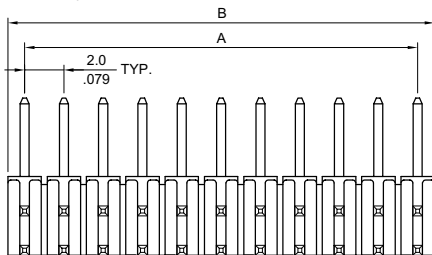
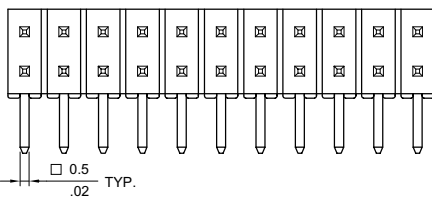


A = 2.0 x No. of Spaces
 B = A + 2.0
 * Available in 8 through 50 circuits

Option Code	Dimension	
	C	D
00	4.0(.157)	2.8(.110)

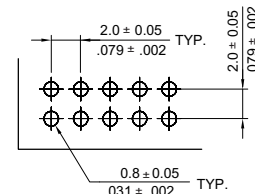


Recommended P.C. Board Layout



A = 2.0 x No. of Spaces
 B = A + 2.0
 * Available in 8 through 50 circuits

Option Code	Dimension	
	C	D
00	4.0(.157)	2.8(.110)



Recommended P.C. Board Layout

Ordering Code

1
 2
 3
 4
 5
 6
CH 7 2
5 0
A
V
1
0 0

1 Series No.
2 Circuits:
 08 to 50

3 Plating code:
 1= Tin-lead over Nickel
 A= Selective Gold flash over Nickel
 B= Selective 15µin Gold plated over Nickel
 C= Selective 30µin Gold plated over Nickel

4 Tail Style:
 V= Straight
 H= Right angle

5 Color: 1= Black

6 Other options:
 00= Standard

*Special option Consult manufacturer

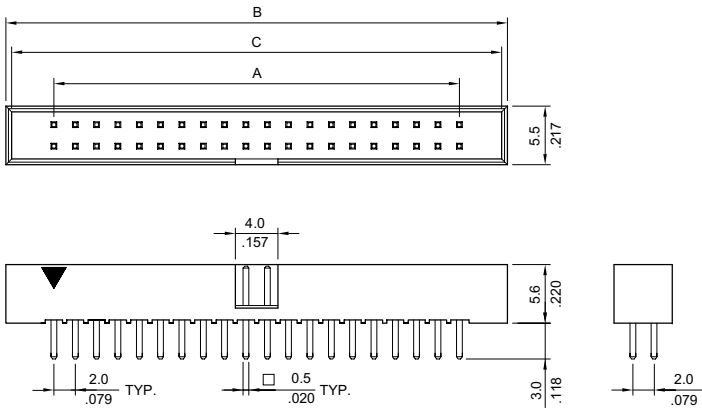
CH74 Series Dual Row Board Mount Pin Header

2.0mm(.079") Center spacing

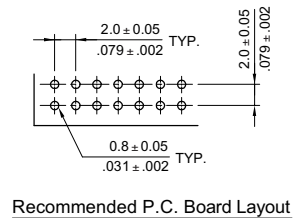
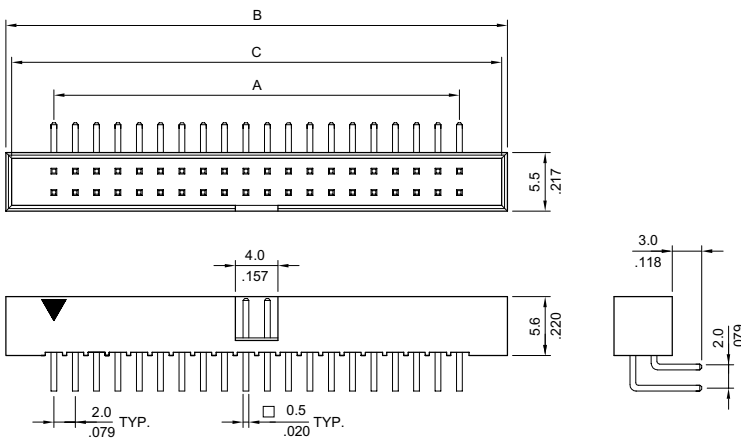
- ⊙ Option high temperature plastic available
- ⊙ Straight and right angle contacts
- ⊙ Mates CA11 Connectors
- ⊙ Packing Method: PE Bag



:E159616



Circuits	Dimension		
	A	B	C
10	8.0(.315)	17.2(.677)	16.1(.634)
14	12.0(.472)	21.2(.835)	20.1(.791)
16	14.0(.551)	23.2(.913)	22.1(.807)
20	18.0(.709)	27.2(1.071)	26.1(1.028)
24	22.0(.866)	31.2(1.228)	30.1(1.185)
26	24.0(.945)	33.2(1.307)	32.1(1.260)
30	28.0(1.102)	37.2(1.469)	36.1(1.421)
34	32.0(1.260)	41.2(1.622)	40.1(1.579)
40	38.0(1.496)	47.2(1.859)	46.1(1.815)
44	42.0(1.654)	51.2(2.016)	50.1(1.973)
50	48.0(1.890)	57.2(2.252)	56.1(2.209)
68	66.0(2.598)	75.2(2.961)	74.1(2.917)



Ordering Code

① CH ② 74 ③ 2 ④ V ⑤ 1 ⑥ 00

- ① Series No.
- ② Circuits:
see above table
- ③ Plating code:
1= Tin-lead over Nickel
2= Gold flash plated over Nickel
3= 15µin Gold plated over Nickel
4= 30µin Gold plated over Nickel
- ④ Tail Style:
V= Straight
H= Right angle
- ⑤ Color: 1= Black
- ⑥ Other options:
00= Standard
*Special option Consult manufacturer

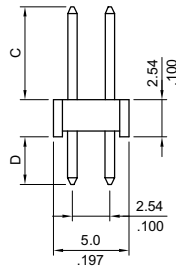
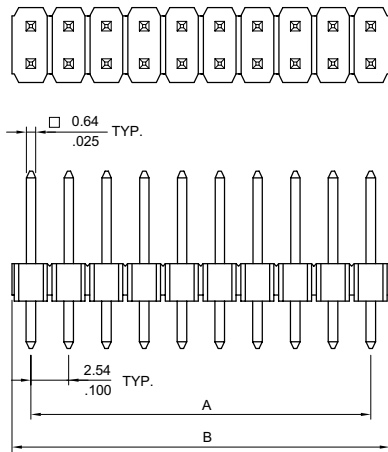
CH81 Series Dual Row Board Mount Pin Header

2.54mm(.100") Center spacing

- ⊙ Option high temperature plastic available
- ⊙ Straight or right angle contact
- ⊙ With standoff prevent flux wicking
- ⊙ Mates CA21, CB82, CB83, CB85, CB87, CB91, CB96 and CB97 Connectors
- ⊙ Packing Method: PE Bag

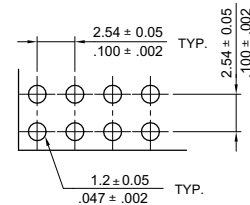


:E159616

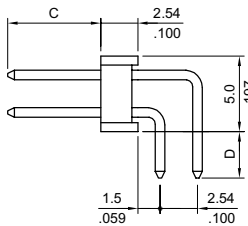
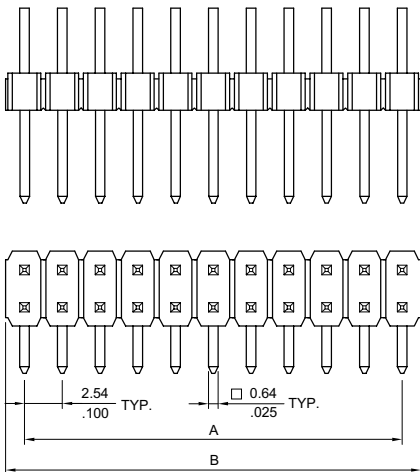


A = 2.54 x No. of Spaces
 B = A + 2.54
 * Available in 4 through 80 circuits

Option Code	Dimension	
	C	D
00	6.0(.236)	3.0(.118)
01	6.26(.246)	3.0(.118)

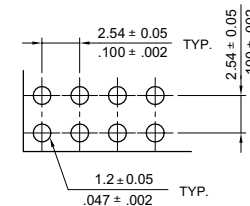


Recommended P.C. Board Layout



A = 2.54 x No. of Spaces
 B = A + 2.54
 * Available in 4 through 80 circuits

Option Code	Dimension	
	C	D
00	6.0(.236)	3.0(.118)
01	6.26(.246)	3.0(.118)
02	3.5(.138)	3.5(.138)



Recommended P.C. Board Layout

Ordering Code

1 CH 8 1 2 8 0 3 2 4 V 5 1 6 0 0

1 Series No.
2 Circuits:
 04 to 80

3 Plating code:
 1= Tin-lead over Nickel
 2= Gold flash plated over Nickel
 3= 15µin Gold plated over Nickel
 4= 30µin Gold plated over Nickel

4 Tail Style:
 V= Straight
 H= Right angle

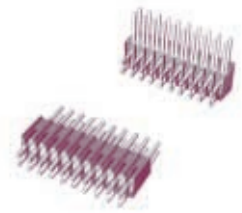
5 Color: 1= Black
6 Other options:

00= Standard
 *Special option Consult manufacturer

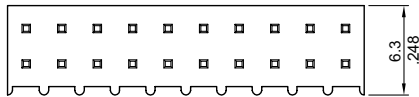
CH84 Series Dual Row Board Mount Pin Header

2.54mm(.100") Center spacing

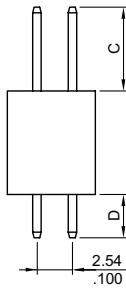
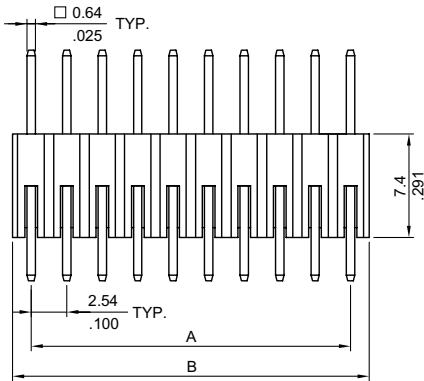
- ⊙ With high profile insulator base
- ⊙ Straight or right angle contact
- ⊙ Mates CA21, CB82, CB83, CB85, CB87, CB91, CB96, CB97 Connectors
- ⊙ Packing Method: PVC Tray



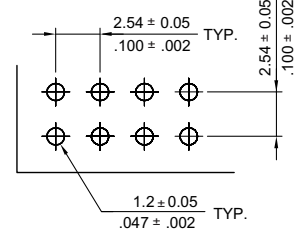
CH



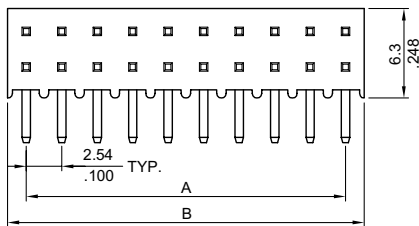
A = 2.54 x No. of Spaces
 B = A + 2.7
 * Available in 4 through 50 circuits



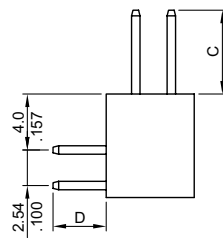
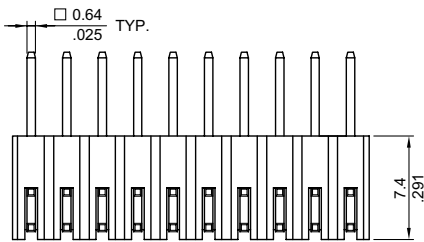
Option Code	Dimension	
	C	D
00	7.0(.272)	3.6(.142)



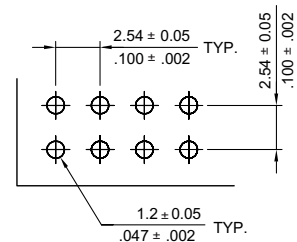
Recommended P.C. Board Layout



A = 2.54 x No. of Spaces
 B = A + 2.7
 * Available in 4 through 50 circuits



Option Code	Dimension	
	C	D
00	7.0(.272)	3.8(.150)



Recommended P.C. Board Layout

Ordering Code

① CH ② 84 ③ 50 ④ 2 V ⑤ 1 ⑥ 00

- ① Series No.
- ② Circuits:
04 to 50

- ③ Plating code:
1= Tin-lead over Nickel
2= Gold flash plated over Nickel
3= 15µin Gold plated over Nickel
4= 30µin Gold plated over Nickel

- ④ Tail Style:
V= Straight
H= Right angle

- ⑤ Color: 1= Black
- ⑥ Other options:
00= Standard

*Special option Consult manufacturer

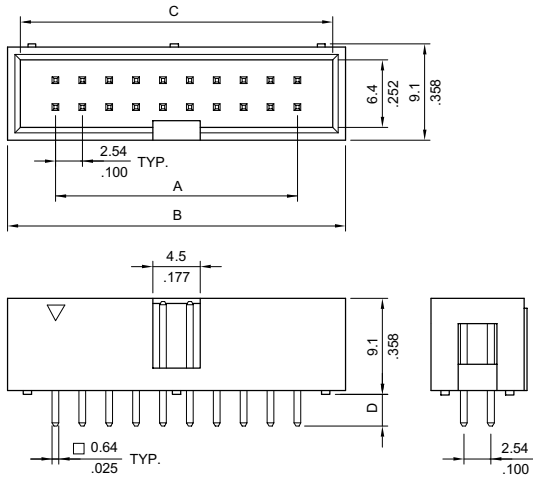
CH87 Series Dual Row Board Mount Pin Header

2.54mm(.100") Center spacing

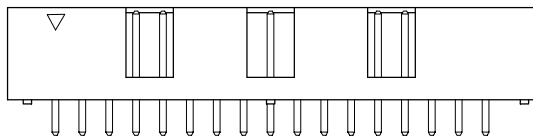
- ⊙ Box type with polarizing slot
- ⊙ Straight or right angle contact
- ⊙ Mates CA21 and CB94 Connectors
- ⊙ Packing Method: PE Bag



:E159616



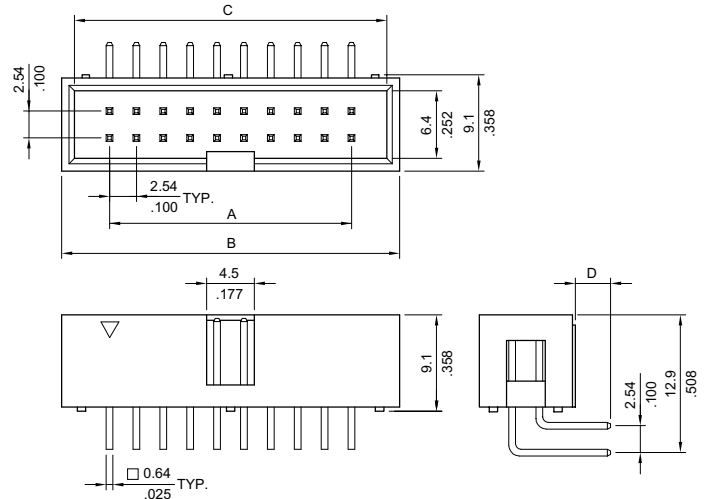
For 8, 10, 14, 16, 20, 24, 26, 30, 34, 40, 44 and 50 Position



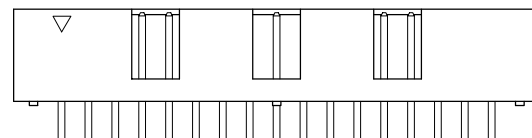
For 60 and 64 Position

A = 2.54 x No. of Spaces
 B = A + 10.16
 C = A + 7.86

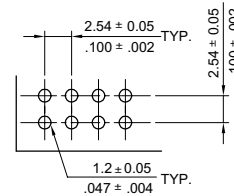
* Available circuits: 8, 10, 14, 16, 20, 24, 26, 30, 34, 40, 44, 50, 60 and 64



For 8, 10, 14, 16, 20, 24, 26, 30, 34, 40, 44 and 50 Position



For 60 and 64 Position



Recommended P.C. Board Layout

Ordering Code

① CH ② 8 ③ 7 ④ V ⑤ 1 ⑥ 00

① Series No.
 ② Circuits:
 See above table

③ Plating code:
 1= Tin-lead over Nickel
 2= Gold flash plated over Nickel
 3= 15µin Gold plated over Nickel
 4= 30µin Gold plated over Nickel
 A= Selective Gold flash over Nickel

④ Tail Style:
 V= Straight
 H= Right angle

⑤ Color: 1= Black
 ⑥ Other options:
 00= Standard

*Special option Consult manufacturer

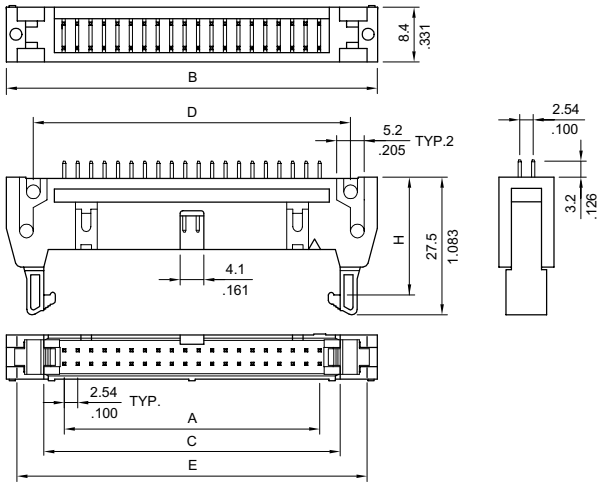
CH88 Series Dual Row Board Mount Pin Header

2.54mm(.100") Center spacing

- ⊙ Shrouded header with eject latch
- ⊙ Straight or right angle contact
- ⊙ Mates CA21 Connectors

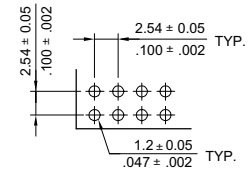


:E159616

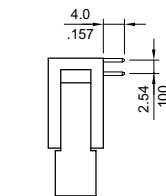
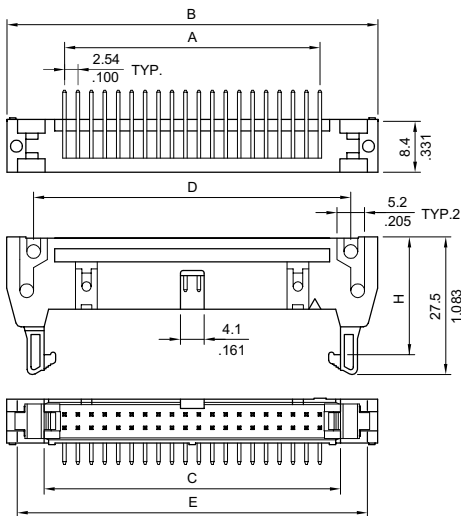


Circuits	Dimension				
	A	B	C	D	E
10	10.16(.400)	32.0(1.260)	17.9(.705)	21.84(.860)	27.94(1.100)
14	15.24(.600)	37.1(1.461)	22.98(.905)	26.92(1.060)	33.02(1.300)
16	17.78(.700)	39.6(1.559)	25.52(1.005)	29.46(1.160)	35.56(1.400)
20	22.86(.900)	44.7(1.760)	30.6(1.205)	34.54(1.360)	40.64(1.600)
24	27.94(1.100)	49.8(1.960)	35.68(1.405)	39.62(1.560)	45.72(1.800)
26	30.48(1.200)	52.3(2.059)	38.22(1.505)	42.16(1.660)	48.26(1.900)
30	35.56(1.400)	57.4(2.260)	43.3(1.705)	47.24(1.860)	53.34(2.100)
34	40.64(1.600)	62.5(2.461)	48.38(1.905)	52.32(2.060)	58.42(2.300)
40	48.26(1.900)	70.1(2.760)	56.0(2.205)	59.94(2.360)	66.04(2.600)
50	60.96(2.400)	82.8(3.260)	68.7(2.705)	72.64(2.860)	78.74(3.100)
60	73.66(2.900)	95.5(3.760)	81.4(3.205)	85.34(3.360)	91.44(3.600)
64	78.74(3.100)	100.6(3.961)	86.48(3.405)	90.42(3.560)	96.52(3.800)

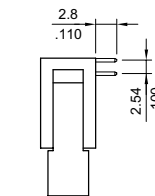
* Long Latch Dim. H= 22.0mm
 * Short Latch Dim. H= 18.4mm



Recommended P.C. Board Layout



P/N: CH88***B100



P/N: CH88***B101

Ordering Code

① CH ② 8 ③ 8 ④ A ⑤ 1 ⑥ 00

① Series No.
 ② Circuits:
 See above table

③ Plating code:
 1= Tin-lead over Nickel
 2= Gold flash plated over Nickel
 3= 15µin Gold plated over Nickel
 4= 30µin Gold plated over Nickel

④ Tail Style:
 A= with long Latch/Straight
 B= with long Latch/Right angle
 C= with short Latch/Straight
 D= with short Latch/Right angle

⑤ Color: 1= Black

⑥ Other options:

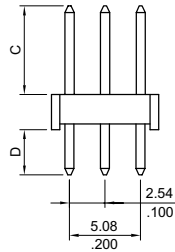
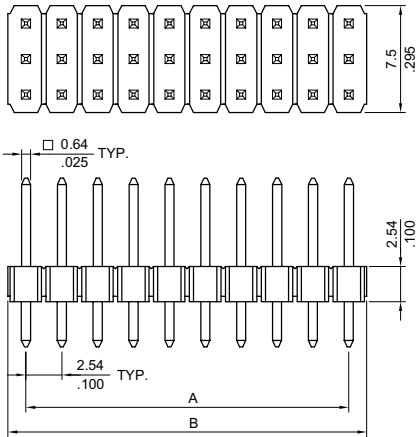
00= Standard

*Special option Consult manufacturer

CH96 Series Triple Row Board Mount Pin Header

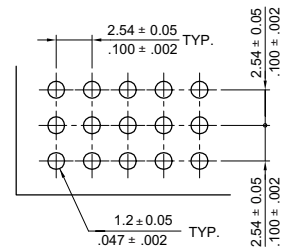
2.54mm(.100") Center spacing

- ⊙ Option high temperature plastic available
- ⊙ With standoff prevent flux wicking
- ⊙ Straight or right angle contact
- ⊙ Mates CB98 Connectors
- ⊙ Packing Method: PE Bag

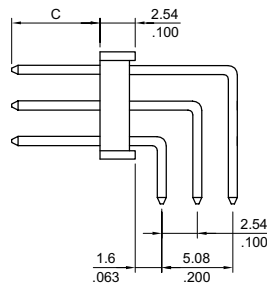
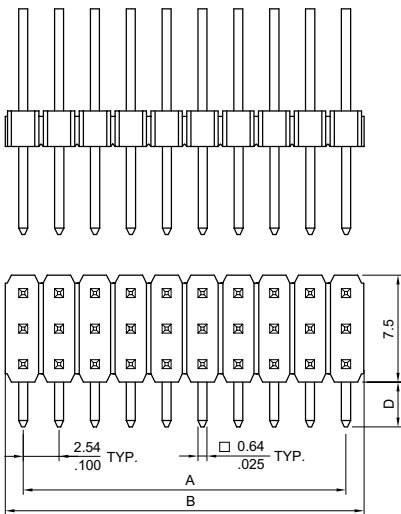


A = 2.54 x No. of Spaces
B = A + 2.54
* Available in 9 through 120 circuits

Option Code	Dimension	
	C	D
00	6.26(.246)	3.00(.118)

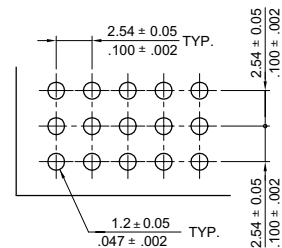


Recommended P.C. Board Layout



A = 2.54 x No. of Spaces
B = A + 2.54
* Available in 9 through 120 circuits

Option Code	Dimension	
	C	D
00	6.26(.246)	3.2(.126)



Recommended P.C. Board Layout

Ordering Code

1 CH 9 6 2 X 2 3 2 4 V 5 1 6 0 0

- 1 Series No.
- 2 Circuits:
09 to 120
X2= 120

- 3 Plating code:
1= Tin-lead over Nickel
2= Gold flash plated over Nickel
3= 15µin Gold plated over Nickel
4= 30µin Gold plated over Nickel

- 4 Tail Style:
V= Straight
H= Right angle

- 5 Color: 1= Black
- 6 Other options:
00= Standard

*Special option Consult manufacturer